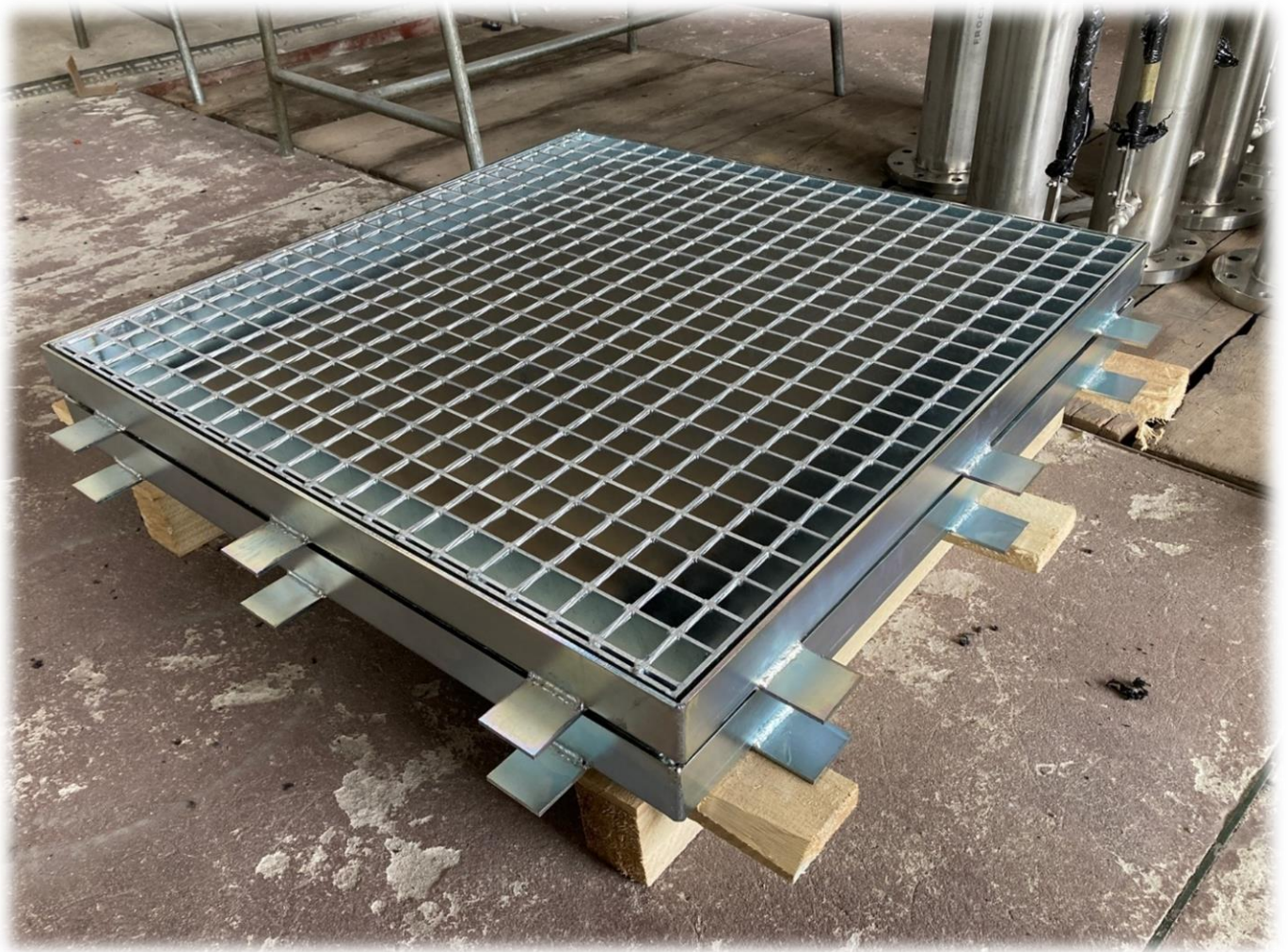


## **Inspection Hatch with Grating**

### **VWR-K**



#### **DESCRIPTION:**

Vortico VWR-K inspection hatches are used wherever access to the space under the floor is required. They come in many variants tailored to the customer's needs. In addition to the range of standard dimensions of inspection hatches, we offer hatches made for special orders with the possibility of adjusting to non-standard dimensions or with additional equipment.

#### **MATERIALS:**

Inspection hatches are made of various materials depending on the customer's needs. Hatch frame Structure made of stainless steel, acid-proof steel, painted carbon steel, galvanized steel or any other type, depending on customer requirements and mounting conditions. Grating can be made from Stainless steel, galvanized carbon steel or plastics.

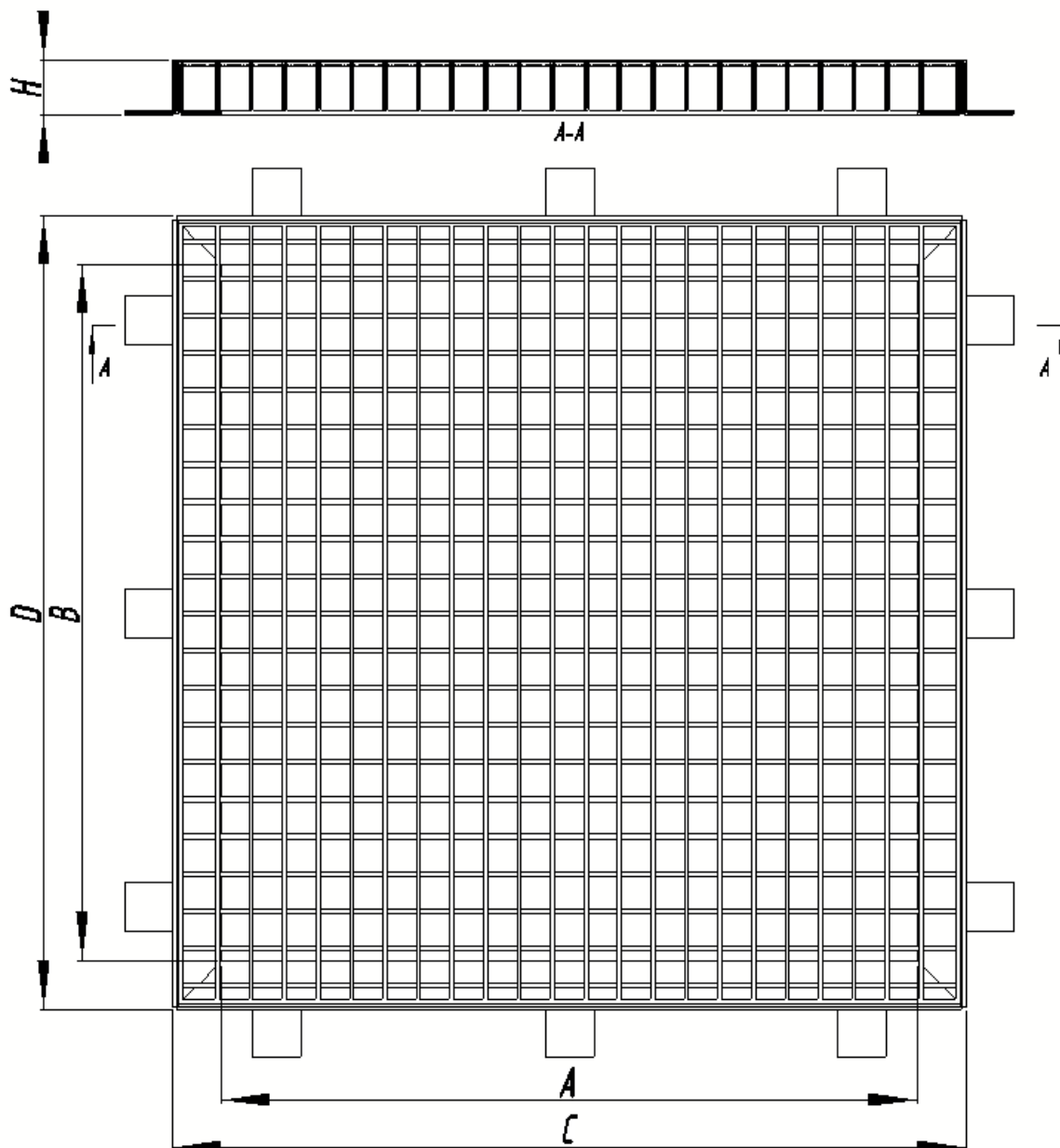
#### **ADDITIONAL EQUIPMENT:**

We manufacture manually removable inspection hatches with handles, dedicated keyholes, as well as hinged covers, equipped with pneumatic actuators or electric.

#### **DOCUMENTATION:**

Standard documentation delivered with the delivery includes: the national declaration of performance, technical and operational documentation along with the operating and assembly instructions. On request, we provide material certificates, welding documents and other according to the customer's needs.

**STANDARD DIMENSIONS:**



Type	Access Dimensions AxB [mm]	External Dimensions Cx D [mm]	Height H [mm]
VWR-K 400x400	400x400	515x515	35*
VWR-K 500x500	500x500	615x615	35*
VWR-K 600x600	600x600	715x715	35*
VWR-K 700x700	700x700	815x815	35*
VWR-K 800x800	800x800	915x915	35*
VWR-K 900x900	900x900	1015x1015	35*
VWR-K 1000x1000	1000x1000	1115x1115	45*
VWR-K 1100x1100	1100x1100	1215x1215	45*

\* This is standard height. The height depends on the customer's specific requirements.